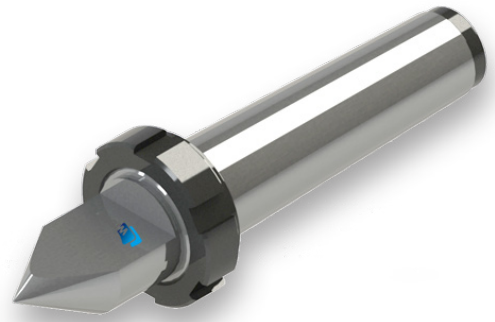
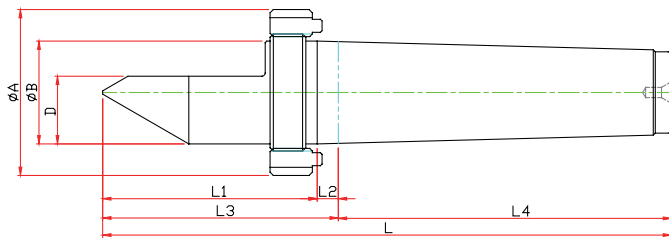


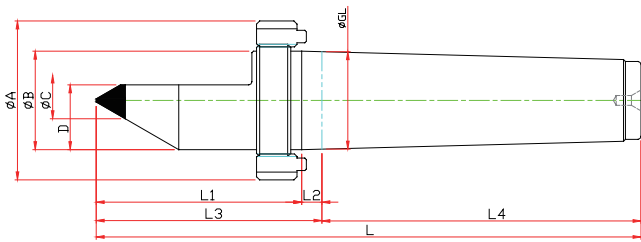
# LM-HN TYPE

※ 너트타입 Nut Type



Model	Order Number	Morse Taper	Dimension										Run Out
			GL	A	L1	L2	L3	L4	D	E	N	L	
LM-1HN	210011	NO.1	12,065	12	31.5	5	36.5	53.5	7.6	22	M16	90	0.003
LM-2HN	210012	NO.2	17,780	18	41.5	6.5	48	64	11	30	M22	112	0.003
LM-3HN	210013	NO.3	23,825	24	49.5	7.5	57	81	15	38	M27	138	0.003
LM-4HN	210014	NO.4	31,267	32	62.5	10	72.5	102.5	21	50	M36	175	0.003
LM-5HN	210015	NO.5	44,399	45	77	11	88	129.5	29.4	63	M48	217.5	0.003
LM-6HN	210016	NO.6	63,348	64	96.5	11.5	108	182	42	79	M68	290	0.005

# LM-HCN TYPE



Model	Order Number	Morse Taper	Dimension											Run Out
			GL	A	L1	L2	L3	L4	C	D	E	N	L	
LM-1HCN	210111	NO.1	12,065	12	31.5	5	36.5	53.5	7	7.6	22	M16	90	0.003
LM-2HCN	210112	NO.2	17,780	18	41.5	6.5	48	64	7	11	30	M22	112	0.003
LM-3HCN	210113	NO.3	23,825	24	49.5	7.5	57	81	10	15	38	M27	138	0.003
LM-4HCN	210114	NO.4	31,267	32	62.5	10	72.5	102.5	14	21	50	M36	175	0.003
LM-5HCN	210115	NO.5	44,399	45	77	11	88	129.5	18	29.4	63	M48	217.5	0.003
LM-6HCN	210116	NO.6	63,348	64	96.5	11.5	108	182	18	42	79	M68	290	0.005

# LM-H SPECIAL

※ 사용자의 조건에 따라 주문, 제작 Customized-special production for user's condition

